

# SI-COLO3 Series

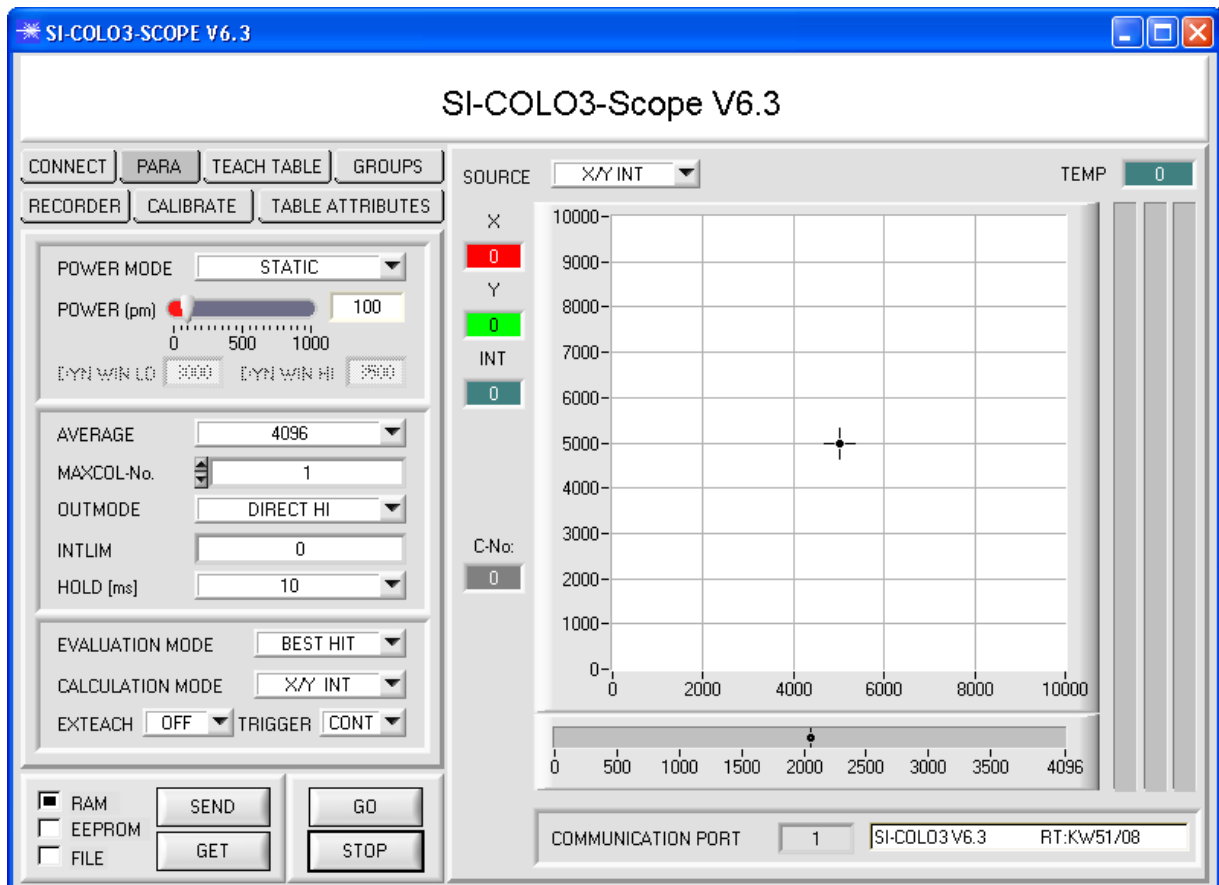
## Changes from COLOR3-Scope V6.2 to SI-COLO3-Scope V6.3

The following is a short summary of the changes made with the software update from COLOR3-Scope V6.2 to SI-COLO3-Scope V6.3.

When the software is started, the following window is displayed on the user interface.

We introduced the CONNECT, PARA, TEACH TABLE, GROUPS, RECORDER, CALIBRATE, and TABLE ATTRIBUTES tabs. After a click on one of these tabs the respective tab will be highlighted in gray and a window for the corresponding software function will be opened.

The functions are the same as in software version 6.2, but the software now is much more clearly structured.



**The following items are new in SI-COLO3-Scope V6.3:**

1. There is an additional **EXT4** trigger mode. This mode functions exactly as **EXT1**, but in contrast to **EXT1** the transmitter LED is turned off with **EXT4** if there is no trigger from IN0 or from the button at the housing. **EXT4** can be used, for example, if the sensor is installed in such a way that it "blinds" the operator when there is no object to be inspected. **EXT4** also is advisable for preserving the light source, e.g. when using an UV transmitter. (With a white-light LED this is not necessary).
2. When you work with **TRIGGER=SELF**, **EXT1**, **EXT2**, **EXT3** or **EXT4** and the sensor is in "triggered" state, this is now visualised by the **TRIG** LED on the user interface. Of course this only works in **GO** mode.
3. The **TABLE ATTRIBUTES** tab opens a window where as in versions 6.2 the color marking for individual rows can be determined. It is now also possible to enter specifications for individual rows in a table. This information is an additional support for remembering taught colors. The color specifications together with the color markings for individual lines are saved to the hard disk of the PC (for memory reasons this is not possible in the sensor). These table attributes can always be loaded again from the hard disk.

